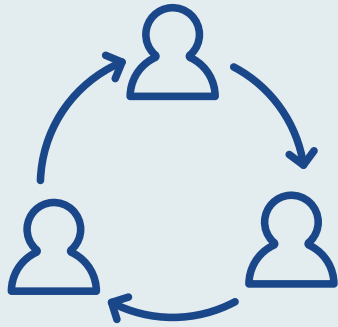


## Team operating hours:

Monday	1pm - 5pm
Tuesday	9am - 5pm
Wednesday	9am - 5pm
Thursday	9am - 5pm
Friday	9am - 12pm

## Referrals



Access to our referral form can be found on our website, [sefton-carers.org.uk](http://sefton-carers.org.uk)

Sefton Carers Centre complies with UK GDPR, all details can be found on our website which also provides details of our privacy statement.

The Parent Carer Team can also refer carers to our in house services which include welfare benefits advice, counselling, energy efficiency and our young carers team. More information on these services is available on our website.

# CARERS TRUST

## Sefton Carers Centre

### You can contact the team via the following methods



0151 288 6060



[parent@carers.sefton.gov.uk](mailto:parent@carers.sefton.gov.uk)



27-37 South Road, Waterloo, Liverpool, L22 5PE



[sefton-carers.org.uk](http://sefton-carers.org.uk)



Sefton Carers Centre

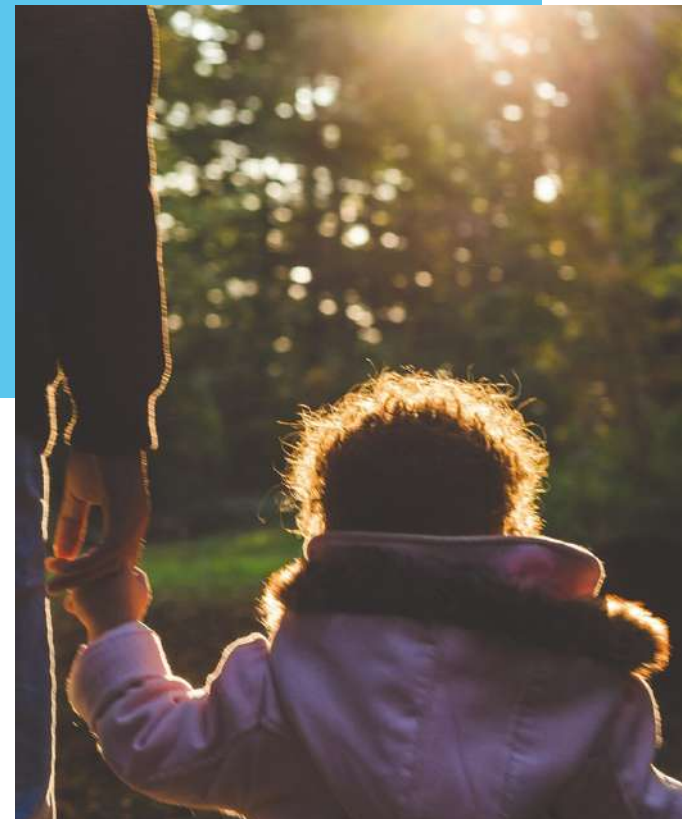


@Seftoncarers



@Seftoncarers

Sefton Carers Centre, 27 - 37 South Road, Waterloo, L22 5PE. 0151 288 6060. [www.sefton-carers.org.uk](http://www.sefton-carers.org.uk) [help@carers.sefton.gov.uk](mailto:help@carers.sefton.gov.uk)  
Sefton Carers Centre is a registered charity in England and Wales No. 1050808. Registered as a company limited by guarantee in England No. 3124430. Registered Office: 27 - 37 South Road, Waterloo, L22 5PE. [@seftoncarers](https://www.facebook.com/seftoncarerscentre) [seftoncarerscentre](https://www.instagram.com/seftoncarers) [@seftoncarers](https://www.tiktok.com/@seftoncarers)



# CARERS TRUST

## Sefton Carers Centre

## PARENT CARER TEAM

*Information for professionals*

# What we do...

- Provide Parent Carers with a point of contact for information, advice and support relating to their caring role and to interpret current legislation and inform them of their rights.
- Signpost Parent Carers to in-house services delivered by Sefton Carers Centre to support emotional wellbeing and their financial needs with a holistic whole family approach.
- Signpost Parent Carers to appropriate services in Health, Social Care, Education and the VCF sector as appropriate.
- Offer low level advocacy to Parent Carers to support their autonomy in accessing services.
- Support consultations and enable Parent Carers to have a voice in the development of services.
- Support Parent Carers in regard to future planning and transition to adult services.

- Identify and apply for external funding which will support the needs of Parent Carers.
- Promote multi agency working partnerships by attending events and meetings.
- Develop peer support groups for Parent Carers to give advice, support, and opportunities to develop knowledge regarding services appropriate to their caring roles.(Face to Face and Virtual)
- Offer and complete Parent Carers Assessments and Reassessments as requested with Parent Carers in line with current legislation. The assessments are completed at an appropriate time for Parent Carers due to the nature and time required.\*
- Work with key organisations such as Parent Carer Forum to support Parent Carers with access to peer support, information and events

*\*NB. Parent Carers Assessments do not provide any additional funding and are not required as part of decision making.*



## Who is a Parent carer

A Parent Carer is a Parent/Guardian who lives with and provides care to a child aged 0-18 with a special educational need or disability (diagnosed or undiagnosed).

## Our Service

Parent Carer Service delivered by Sefton Carers Centre is committed to supporting unpaid carers of children from 0-18 years old via targeted advice, information and support. This is carried out in a way that is sensitive to their needs and wishes whilst ensuring compliant with the Children and Families Act 2014, Disabled Children, Equality Act 2010, and the Care Act 2014.

## Our Coffee Morning Groups

The Team run Parent Carer coffee morning groups (during term-time) in Waterloo, Southport and Virtual online. The groups provide the opportunity to speak to a variety of professionals in the local community, as well as gaining support from the team and other parent carers.

Please email [parent@carers.sefton.gov.uk](mailto:parent@carers.sefton.gov.uk) for further information or to get the link to join any of the virtual sessions.

